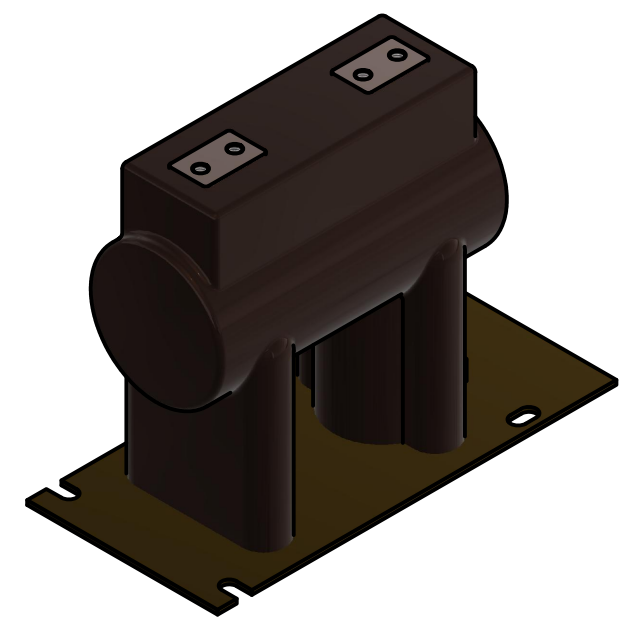


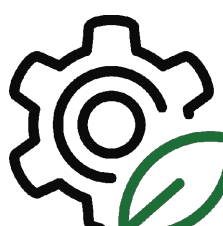
sec. output konvetional transformer
M5x10

sensor output

1:5



Standard:
IEC 61869-1
IEC 61869-6
IEC 61869-10
IEC 61869-11
Isolation level:
17,5/38/95kV
24/50/125kV
Rated current :
up to 1500A ext.120%
Rated voltage:
max. 22kV/V3
Temperature range:
-25/65°C
Accuracy class:
VS 0,2/0,5/1/3 & 3P/6P;
CS 0,2S/0,2/0,5S/0,5/1/3 max P20
Secondary output:
VS 3,25V/V3 or customer defined;
CS 225mV or customer defined
Burden:
VS 200kΩ ±1%; max. 1nF or customer defined;
CS >20kΩ or customer defined;
Ith: 40kA 3sec.

Dept. GWP	Technical reference	Created by W. Bacher 05.03.2020	Approved by N. Juschicz 05.03.2020
 A3/1:3	Document type Drawing	Document status Released	
	Title Indoor Block Combined Sensor	DWG No. K240A-xx	
		Rev. 2	Date of issue 01.04.2020