

Ratind plate

Logo

Ø83

127.5

73.5

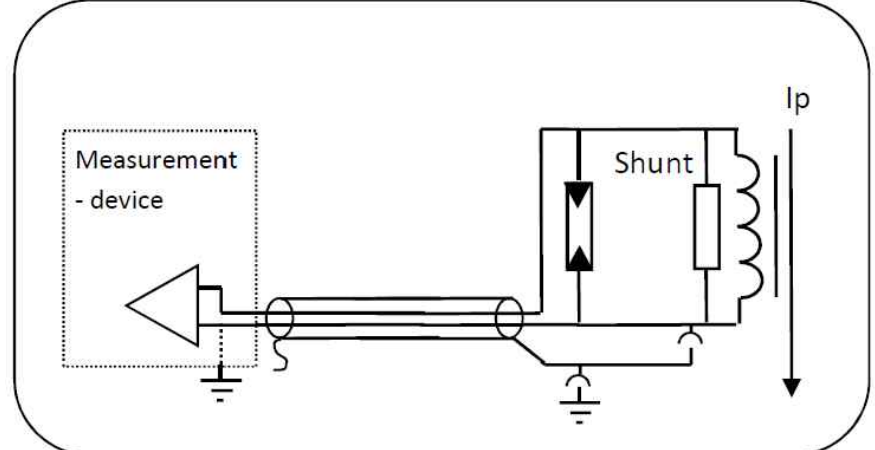
108

28

P1

P2

Function principle:



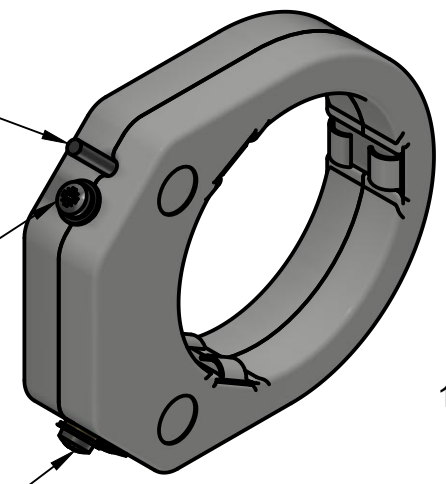
- Type:
N = Current sensor
 Nominal current:
 006 = 60A
 030 = 300A
 060 = 600A
 100 = 1000A
 Form factor:
 R = Ring closed
 T = Divisible
 E = Earth sensitive
 Customer
 Quality level:
 C = CI 1
 L = CI 0,5
 M = CI 0,5 & 2,5kHz
 H = CI 0,2 & 10kHz

N xxx X xx

Secondary terminal custom defined
 Recommendation:
 0,5 up to 100m 3pole shielded cable
 open ends with shield - outlet

Ground method

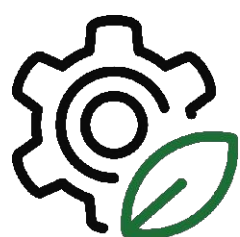
Methode	Screw (NC)
floated earth potential	closed
reference earth potential	open



Ground terminal
 M5

1:2

Standard: IEC 60044-8
 Isolation level: 0,72kV
 Temperature range: -40/80°C
 Accuracy class: 0,2S/0,2/0,5S/0,5/1/3 & max P10
 lth: 25kA 3sec.

Dept. GWP	Technical reference	Created by W. Bacher 21.09.2018	Approved by N. Juschicz 21.09.2018
 1:1	Document type Drawing		Document status
	Title Indoor Current Sensor Ring Type		DWG No. NxxxR-xx
	Rev. 1	Date of issue 21.09.2018	Sheet 1/1